

Guide By Your Side Quarterly Report

July - September 2022



CONTACT US:

Carrie Balian, Program Coordinator
224.343.1873
ilhvgbys@gmail.com
<https://www.ilhandsandvoices.org/guide-by-your-side>

PROGRAM INFORMATION:

- 1 Program Coordinator
- Diversity & Equity Infusion Specialist
- Part C to Part B Transition Specialist
- LTF (Lost to Follow Up) Specialist
- 11 Parent Guides (PG)
 - Located throughout the state
 - Backgrounds vary in communication and amplification opportunities
 - Guides who are native Spanish speakers
 - Parent Guide who is Deaf

"What works for your child is what makes the choice right."™

OUR MISSION:

Guide By Your Side (GBYS) provides unbiased emotional support and resources by trained Parent Guides to families with children who are deaf/hard of hearing.

Through IL Hands & Voices fundraising, personal donations and funding through the Illinois Early Hearing Detection and Intervention Program, Illinois Hands & Voices Guide By Your Side is able to provide free services to families. Families can be referred to the program from providers or call directly to participate.

CONNECT WITH US

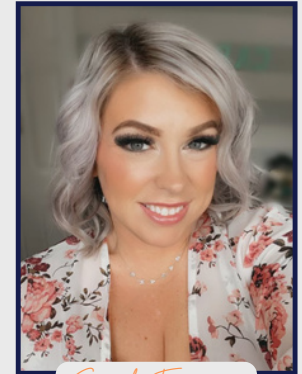


CONGRATULATIONS!

We are so excited to announce that two of our Parent Guides have promoted within our IL Hands & Voices Guide By Your Side Leveled Recognition Program (LRP)! Kelley Hemesath has promoted to our highest level of the LRP by achieving the Senior Guide title. Sarah Esparza promoted to Lead Guide! Amazing work ladies! The LRP focuses on developing leadership skills while encouraging involvement within our community and is used by all Guide By Your Side programs. Congratulations Kelley & Sarah on your promotions! The Leveled Recognition Program (LRP) levels are Guide, Lead and Senior. The Guides can promote to the next level by participating in certain activities such as being a member on local and national committees, mentoring guides and presenting at conferences, just to name a few. Guides can work on tasks, activities and commitments on all levels simultaneously. Each level in our IL LRP program provides a new pay rate in addition to recognition for their outstanding achievement.



Kelley Hemesath



Sarah Esparza

GRACE AWARD WINNERS

The Illinois Sound Beginnings Partnership is proud to announce that we are the recipients of the 2022 Generating Real Action by Cultivating Engagement (GRACE) Award from Expecting Health and Baby's First Test. The award seeks applicants who engage families and communities in newborn screening with grace and authenticity so that family needs are met and lessons learned are integrated into future strategies for change in newborn screening.

The Illinois Sound Beginnings Partnership is an Early Hearing Detection and Intervention (EHD) collaboration between the Illinois Department of Public Health (IDPH) and Illinois Hands & Voices Guide By Your Side (ILHV GBYS).

Highlighting the work of the Illinois Sound Beginnings team, they were able to illustrate a commitment to meeting families and community partners where they are in order to support and engage families within the newborn screening system. The Baby's First Test team described the Illinois partnership's work in the award letter this way: "Your team's commitment to newborn screening is undeniable, and your inclusive approach to engaging families is innovative, straightforward, and scalable. The selection committee was beyond impressed with your collaborative program and felt that it truly embodied the spirit and culture of the GRACE Award."

Illinois Sound Beginnings Leadership Team

PROVIDING TIMELY ACCESS TO UNBIASED PARENT SUPPORT AND RESOURCES FOR FAMILIES WITH CHILDREN WHO ARE DEAF/HARD OF HEARING.

Dr. Ginger Mullin

Carrie Balian

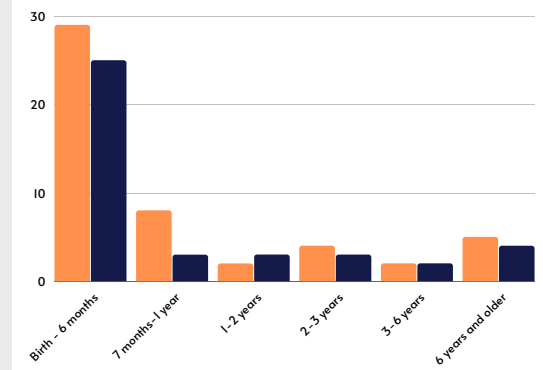
Gabrielle Bires

Andrea Marwah

Kathleen Jordan

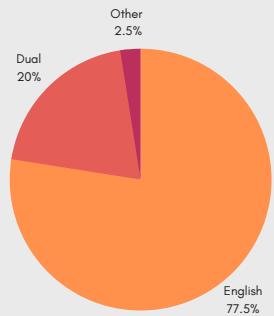
Andrea Johnson

SECOND & THIRD QUARTER COMPARISONS

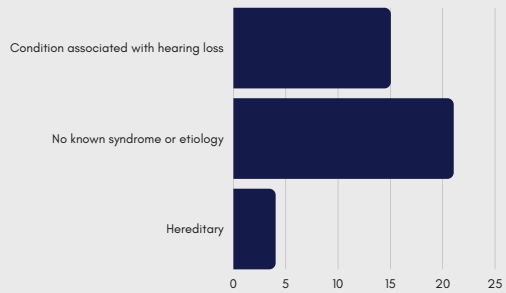


Orange bars represent 2022 second quarter GBYS child age at enrollment
Blue bars represent 2022 third quarter GBYS child age at enrollment

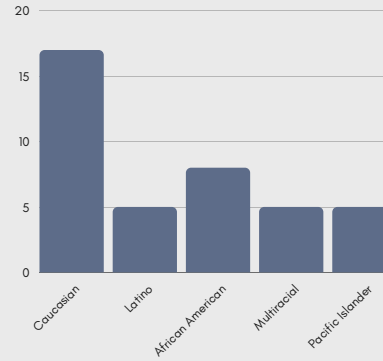
GBYS Data from July - September 2022



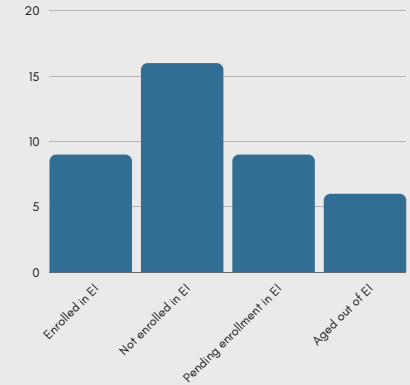
Primary language in the home



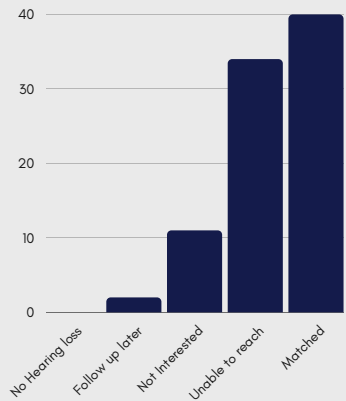
Medical history of enrolled child



Racial identity of enrolled child

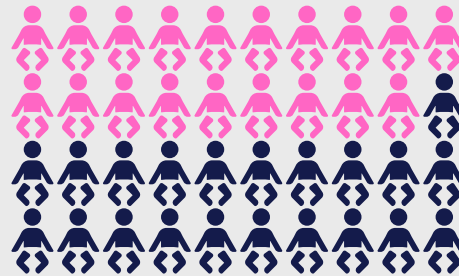


Early Intervention status at time of enrollment
Pending enrollment means that the family has had contact with EI and is working through the enrollment process.



Enrollment status

Matched = 40, Unable to reach = 34, Not interested = 11
Follow up with family at a later date = 2, No hearing loss = 0



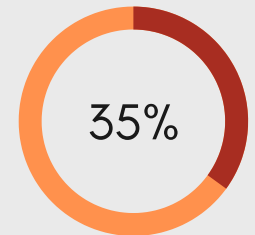
Gender of those enrolled

Pink = Female
Blue = Male



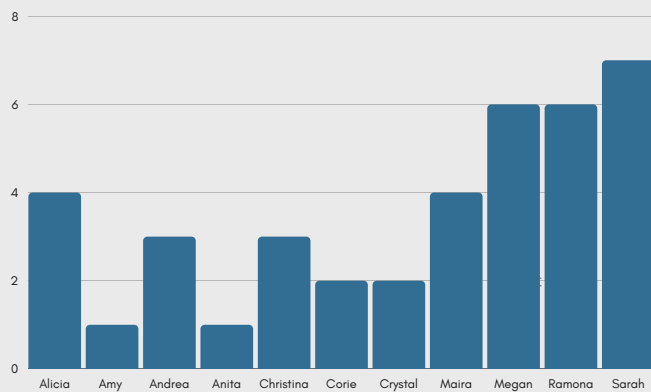
Unilateral vs. Bilateral hearing loss

Orange = Unilateral
Blue = Bilateral



Amplification status at time of enrollment

Orange = No hearing technology in use
Red = Using hearing technology



Parent Guide Matches



THIS QUARTERLY REPORT IS SUPPORTED IN PART BY GRANT FUNDING THROUGH THE IL EARLY HEARING DETECTION & INTERVENTION (EHDI) PROGRAM.