



Introducing....

The 2011-2012 Guide By Your Side Team! We have just completed our annual in-person team training where we welcomed three new team members!

In the picture from left to right, top to bottom is: Christa, Pauline, Jaclyn, Maria, Laura, Lisa, Ali, Crystal, Sinai, Kelley, Eliza, Carrie, Andrea and Cari.

If you would like to meet the Parent Guide in your region, obtain GBYS information to share with families or if you would like to refer a family to our program then please contact the Program Coordinator, Carrie Balian, at 866.655.4588 or email her at GBYS@choicesforparents.org.

Our Mission:

Guide By Your Side provides unbiased, emotional support and resources by trained Parent Guides to families with children who have a hearing loss.

Through the generosity of private grants, personal donations and funding through the Illinois Early Hearing Detection and Intervention Program and CHOICES for Parents, Guide By Your Side is able to provide free services to families. Families can be referred to the program from providers or call directly to participate.

If you would like to refer a family, request brochures/posters or make a donation please contact the GBYS Program Coordinator, Carrie Balian.

Program Information:

- 1 Program Coordinator
- 13 Parent Guides (PG)
 - Located throughout the state
 - Backgrounds vary in communication opportunities and amplification opportunities
 - 2 PGs who are native Spanish speakers
 - PG who is Deaf

Comparison of ages of children enrolled in GBYS from Apr – June 2011 and July-Sept 2011

	Apr-Jun 2011	Jul-Sept 2011
Birth-1 year old	30%	26%
1-2 years old	20%	21%
2-3 years old	5%	21%
3-6 years old	20%	11%
6 years and older	25%	21%

Did you know?

We hold meetings for families called “Conference Calls for All” several times a year? These meetings allow families to dial in after the kids are in bed, connect with other families throughout the state, get updates about state events/resources and learn more from guest speakers? We have two calls coming up. Please feel free to share this information with others and join us on the call!

Participants call: 1.877.402.9753 enter guest code: 7087114

- Andrea Marwah will be discussing siblings of children who have a hearing loss on Jan. 16th at 8:30pm.
- Sam Kim will be sharing about a day in the life of a person with hearing loss and what assistive technology is available to help them throughout their day. February 27th at 8:30pm.

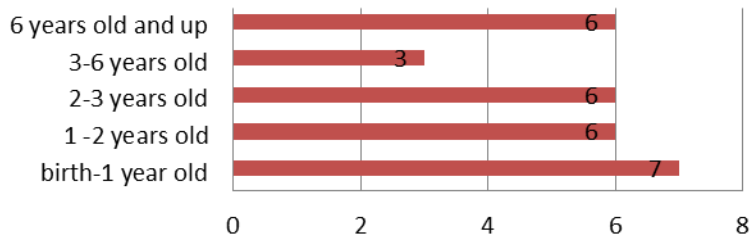


Quarter Reporting for Apr. 2011 – June 2011:

- 30 Families referred , 28 Families matched
- **Ethnicity** of the families referred:
 - 39% Latino (11 families)
 - 21% Caucasian (6 families)
 - 18% Multiracial (5 families)
 - 11% African American (3 families)
 - 7% Pacific Islander (2 families)
 - 4% Asian (1 family)
- **Age** of children enrolled in GBYS:
 - 26% Birth-1 year old
 - 21% 1-2 years old
 - 21% 2-3 years old
 - 11% 3-6 years old
 - 21% 6 years and older
- **Primary Language** in the home:
 - English – 14 families
 - Spanish – 6 families
 - English/Spanish – 4 families
 - English/ASL – 2 families
 - Other – 2 families
- **Newborn Hearing Screening** results as reported by the parent:
 - Did Not Pass – 16 children
 - Passed – 4 children
 - One pass/one DNP – 3 children
 - Not Screened – 5 children

- **Medical History** suggestive of:
 - Condition associated with a hearing loss – 6 children
 - No known syndrome or etiology – 21 children
 - Hereditary – 1 child
 - Hearing loss and additional needs – 6 children
- **Unilateral vs. Bilateral** hearing loss:
 - Bilateral – 25 children
 - Unilateral – 2 children
 - Auditory Neuropathy – 1 child
- **Gender** of children enrolled in GBYS:
 - 15 male, 13 female
- **Insurance** information of enrolled families:
 - ALL Kids – 15 families
 - Private – 13 families

Ages of children when enrolled in GBYS

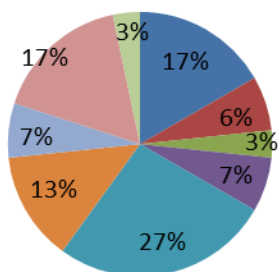


Stay up to date on events and resources by becoming a fan of Illinois Guide By Your Side!



GBYS Referral Sources

July 2011 - Sept. 2011



- GBYS Parent Guide
- GBYS Families
- Conference Call for All
- Part B
- CHOICES for Parents
- GBYS brochure
- Part C (including contractors)
- Audiologist / ENT
- Hands & Voices website

Guide By Your Side (GBYS) is a collaborative program of Illinois Hands & Voices, the Illinois Early Hearing Detection & Intervention (EHDI) Program and CHOICES for Parents.

